

Vacc-Safe 2~8°C Pharmacy refrigerator

Suitable to store vaccines, medicines and laboratory products at 2°C to 8°C temperature range. Perfect for use in pharmacies, pharmaceutical factories, hospitals, medical clinics and laboratories.

Leading technology for Safer storage and Higher temperature stability.



VS606P

Safer Storage Superior Temp. uniformity & Precise control

- Microcomputer temperature control.
- Dual display, temperature & Humidity. Temperature accuracy 0.1°C. Temperature variation $\leq 2^\circ\text{C}$. Temperature uniformity $\pm 1^\circ\text{C}$. USB port, temp. record traceable. Backup battery. Audible & visual alarm systems.

Advanced Technologies Reliable & stable performance

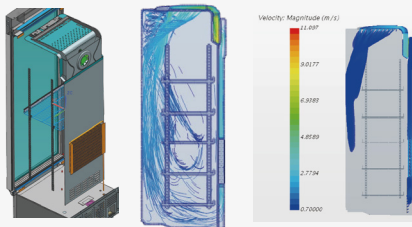
- International famous inverter compressor. Top cooling system. DC turbo fan. Built-in air duct.
- LBA forming technology.
- Micro-channel condenser.

Humanized Design Friendly for daily use

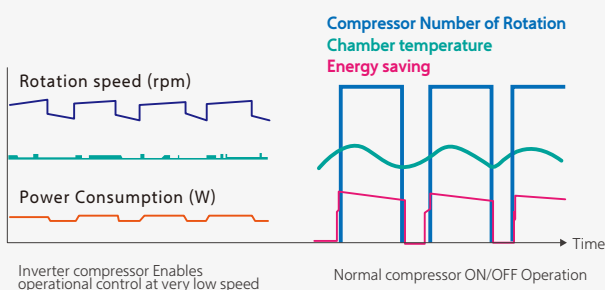
- Electric heating glass door. Self closing door. Adjustable shelves with label holder.
- Port hole.
- Wide voltage range design.

Top cooling system

Strong cooling airflow from the top to the bottom, works as an air curtain to block the external hot air from entering the refrigerator when door is opening, so as to prevent the temperature in the cabinet from rising rapidly, also contributes better temperature uniformity performance.



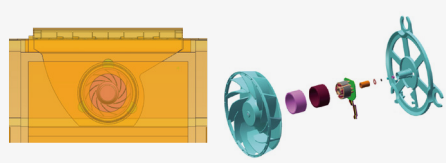
Improves temperature uniformity performance by 40%.
Max interior temperature difference 1°C.
Prevent temperature rising rapidly when door is opening.
Energy consumption 47% lower than similar sized normal pharmacy refrigerator.



Inverter Compressor

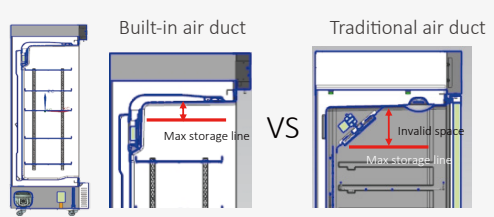
Improve cooling performance.
Reduce energy consumption by 15%.
Decrease noise level.
20% higher quick-cooling ability.
Interior temperature variation within 2°C.

Vacc-Safe 2~8°C Pharmacy refrigerator



DC Turbo Fan

Decrease noise level by 8%
 Integrated DC Turbo Fan works with smaller vibration and higher efficiency.
 Safer for daily use.
 No strong electric component in chamber, safer & more reliable.



Built-in air duct

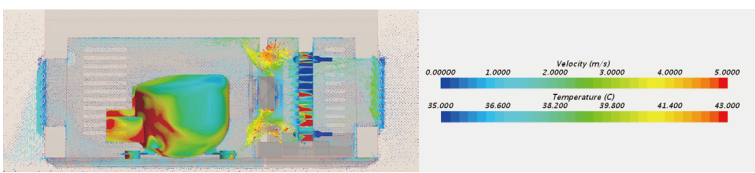
Increase the effective interior space by 10%
 Less interior space occupancy.
 Built-in air duct plus the Top cooling design, ensure temperature in the top of chamber is cool enough for storage.

Dual Display

Display real-time Temperature & Humidity.



Micro-channel condenser

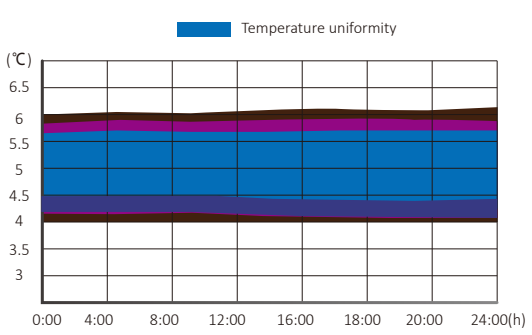
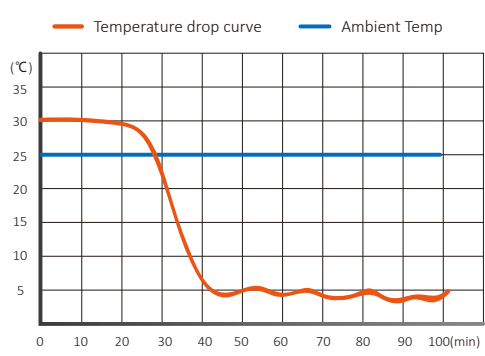



LBA Forming Technology

The world's leading fourth generation foaming agent
 More uniform density, Better insulation, more energy-saving.
 More reasonable foaming layer design, larger interior storage space.

Compressor overheating protection, effectively improving the service life of the core part.
 Powerful heat dissipation for condenser, heat exchange capacity increase by more than 20% than common copper tube fin condenser of other suppliers.

Typical Performance Characteristics at 25°C Ambient



| | | |
|--------------------------|--------------------------------|---|
| | Product Image |  |
| | Series | 2nd Generation |
| Item | Model No. | VS606P |
| Dimensions | Load capacity (40HQ) | |
| | Fridge Storage Volume(L) | 606 |
| | External Material | PCM |
| | Internal Material | PCM/Stainless steel |
| | Product Dimensions(mm)(wxdxh) | 760*755*1925 |
| | Interior Dimensions(mm)(wxdxh) | 660*590*1560 |
| | Net/Gross Weight | 116/138 kg |
| Technical data | Cooling Type | Forced air cooling |
| | Defrost type | auto |
| | Climate Class | N |
| | Refrigerant/Amount(g) | R600a/52g |
| | Compressor type | Inverter |
| | Sensor Qty | 5 |
| Product Performance | Temperature Range | 2 ~ 8°C |
| | Temperature uniformity/°C | ±1 |
| | Temperature variation/°C | ≤2 |
| | Temperature Accuracy | 0.1 |
| Control | Controller | Microprocessor |
| | Display | LED(Temperature & Humidity) |
| Electrical data | Rated Current(A) | 2.2 |
| | Rated Power(W) | 360 |
| Alarms | Power Failure Alarm | Y |
| | Sensor Failure Alarm | Y |
| | Environment Temperature Alarm | Y |
| | Door ajar Alarm | Y |
| | High Temperature Alarm | Y |
| | Low Temperature Alarm | Y |
| | Remote Alarm | Y |
| Configuration | Shelves/Drawers Qty | 6 |
| | Door | Glass door/Electrical heating |
| | Auto close door function | Y |
| | Label Holder | Y |
| | Cable Port | Y |
| | Castors/type | 4/Omni-directional 2/Fixed wheels |
| | USB | Y |
| | RS-485 Port | N |
| | Printer | Optional |
| | Backup Battery | Y |
| Backup Battery endurance | 15h | |